

Welcome

THE PLACE OF  
**97**  
INHERITANCE  
YEARS  
OLD INHERITANCE

---

**RAJSHREE**  
SAMVAR

---

4 BHK LIVING



BUILDING EXTERIOR



BUILDING EXTERIOR



BUILDING EXTERIOR



RECEPTION AREA



GYM



MULTI FUNCTIONAL HALL



LIVING ROOM



LIVING ROOM



KITCHEN



DINING ROOM



CAR PARKING



GROUND FLOORPLAN



BUILDING EXTERIOR



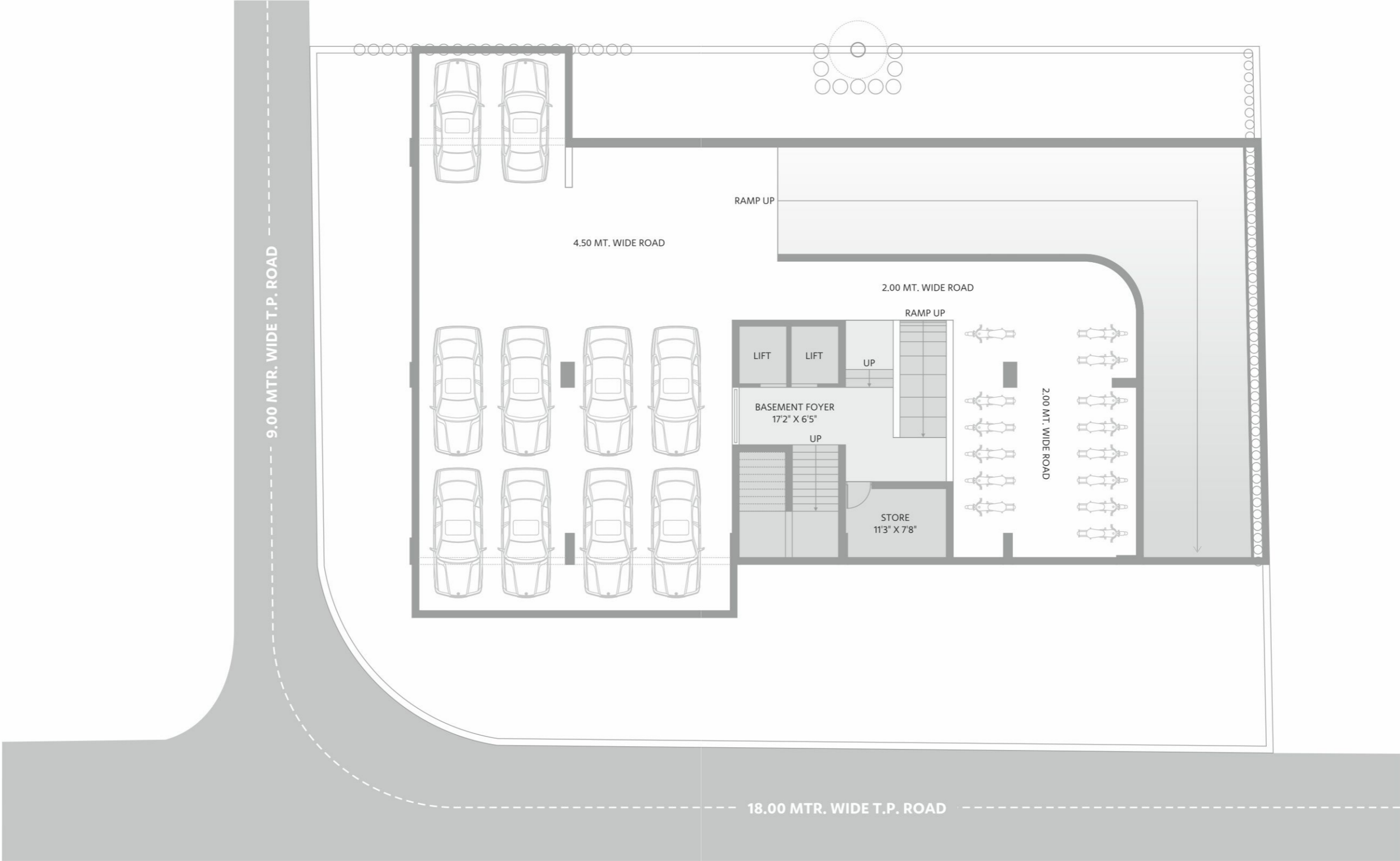
TYPICAL FLOOR PLAN

# LEGENDS

1	DRAWING ROOM	13'1" X 23'11"
2	DINING	11'0" X 14'0"
3	VERANDAH	11'0" X 4'11"
4	KITCHEN	10'7" X 12'11"
4A	STORE	4'6" X 6'0"
4B	WASH YARD	5'9" X 6'0"
5	PUJA / FOYER	6'1" X 4'8"
6	M. BEDROOM-01	15'6" X 11'0"
6A	TOILET	5'6" X 7'7"
7	M. BEDROOM-02	11'0" X 15'6"
7A	TOILET	5'6" X 7'7"
8	GUEST BEDROOM-03	12'8" X 11'0"
9	M. BEDROOM-04	11'0" X 15'6"
9A	TOILET	11'0" X 7'7"
10	G.TOILET	7'7" X 7'4"



UNIT PLAN 4 BHK



PARKING PLAN

## SPECIFICATION



### FLOORING

- Italian marble in drawing ,dining& kitchen.
- Vitrified tiles in all bedrooms.
- Ceramic tiles in all bathrooms.
- Rustic tiles in balcony.
- Kota stone or similar stone in store and wash area.

### KITCHEN

- Polished natural granite platforms.
- Stainless steel kitchen sink.
- Glazed /ceramic tile dado up to the lintel level on walls above the platform.

### WALLS

- Interior walls are plastered and putty finished.
- Exterior walls are painted with a 100% acrylic based paint.

### DOORS

- Decorative main door with both side veneer finish.
- MDF finish flush door with wooden polish framing in all bedrooms and bathrooms.

### WINDOWS

- Powder coated / anodized aluminium window with stone jamb.

### BATHROOMS

- Glazed / ceramic tile dado on the walls up to the lintel level.
- High quality vitreous sanitary ware and plumbing fixtures.

### PLUMBING WORK

- CPVC water supply pipes.
- UPVC for soil ,waste& drainage.

### ELECTRIFICATION

- Concealed PVC conduits with PVC insulated ISI grade copper wiring.
- Points for lighting and power.
- Modular switches with MCB distribution board.

### SOME MORE FEATURES TO ADD EASE IN YOUR LIFE

- Air conditioning piping work in all bedrooms.
- Geyser points in all bathroom.
- Provision for telephone ,cable / DTH and broadband internet connection.
- Three layer security system with CCTV camera.
- Two high speed elevators.



GYM



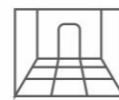
CAR PARKING



MULTI PURPOSE  
HALL FOR  
SOCIETY USE



CCTV  
SECURITY



ENTRANCE  
FOYER

## RAJSHREE SAMVAR

10, Maharashtra, Opp. Sampatti Flat  
Near HCG Hospital, Mithakhali,  
Ahmedabad.

**ARCHITECT** : APURVA AMIN

RAJSHREE BUILDCON  
A/602 GANESH PLAZA, OPP. NAVRANGPURA BUS STAND  
NAVRANGPURA, AHMEDABAD-06

#### Note:

The Information contained in this brochure is subject to change as may be approved by the authorities and cannot form part of any offer or contract. All Plans are subject to any amendments approved by the relevant authorities. Floor areas are approximate and subject to final survey. Illustrations in this brochure are artists impressions and serve only to give an approximate idea of the project.

