



RAJSHREE SAMVAR 2, NEAR ST. XAVIER'S COLLEGE, UNIVERSITY ROAD, NAVRANGPURA, AHMEDABAD, GUJARAT-380 009  
PH - 7575 077229 | EMAIL : rajshreeprocon@gmail.com

RERA: PR/GJ/AHMEDABAD/AHMEDABAD CITY/AUDA/RAA10730/041022/WWW.GUJRERA.GUJARAT.GOV.IN



10.11 design > 9925113065



RAJSHREE  
SAMVAR II



Truly majestic, aesthetically designed  
exteriors very effortlessly extend  
a hint of what resides beyond.  
A perfect forward to a magical  
experience of RAJSHREE SAMVAR II.  
The intrigue gets further heightened  
when the impeccable planning  
embodies in that gracious structure  
surface to amaze your being. The  
perfect place to be at peace with  
yourself and with those about whom  
you care the most. Surrounded by  
features to make every moment a  
pleasure to live and enjoy life at  
RAJSHREE SAMVAR II.

A PARADISE OF  
NEW BEGINNINGS  
4 B H K  
LIFESTYLE APARTMENT



# LUXURY SURROUNDED BY GREENERY

A perfect forward to a magical experience of RAJSHREE SAMVAR II. The intrigue gets further heightened when the impeccable planning embodies in that gracious structure surface to amaze your being.







# A GOLDEN CHANCE OF SPARKLING LIFE

Luxury feels great in the company of modern amenities for you for your next generation and for everyone; the joy becomes multi-fold. And to make our every amenity special, we have added diligence and care in it.





## A LIFE ABOVE ALL

Feel the experience of a life with luxury and comfort is the extraordinary choice. offers luxurious 4 BHK prestigious homes, which are a symbol of comfort and convenience. From the amenities to the lifestyle, your home becomes an epitome of elegance. Experience the bliss of life with the happiness of your family.





AMENITIES



SECURITY  
CABIN



GYMNASIUM



CHILDREN  
PLAY PARK



INFORMAL  
STEPPED SITOUTS



EVENT  
LAWN



YOGA  
DECK



INDOOR  
GAMES



SENIOR CITIZEN  
SIT OUT



CLUB HOUSE



2 HIGH SPEED  
ELEVATORS







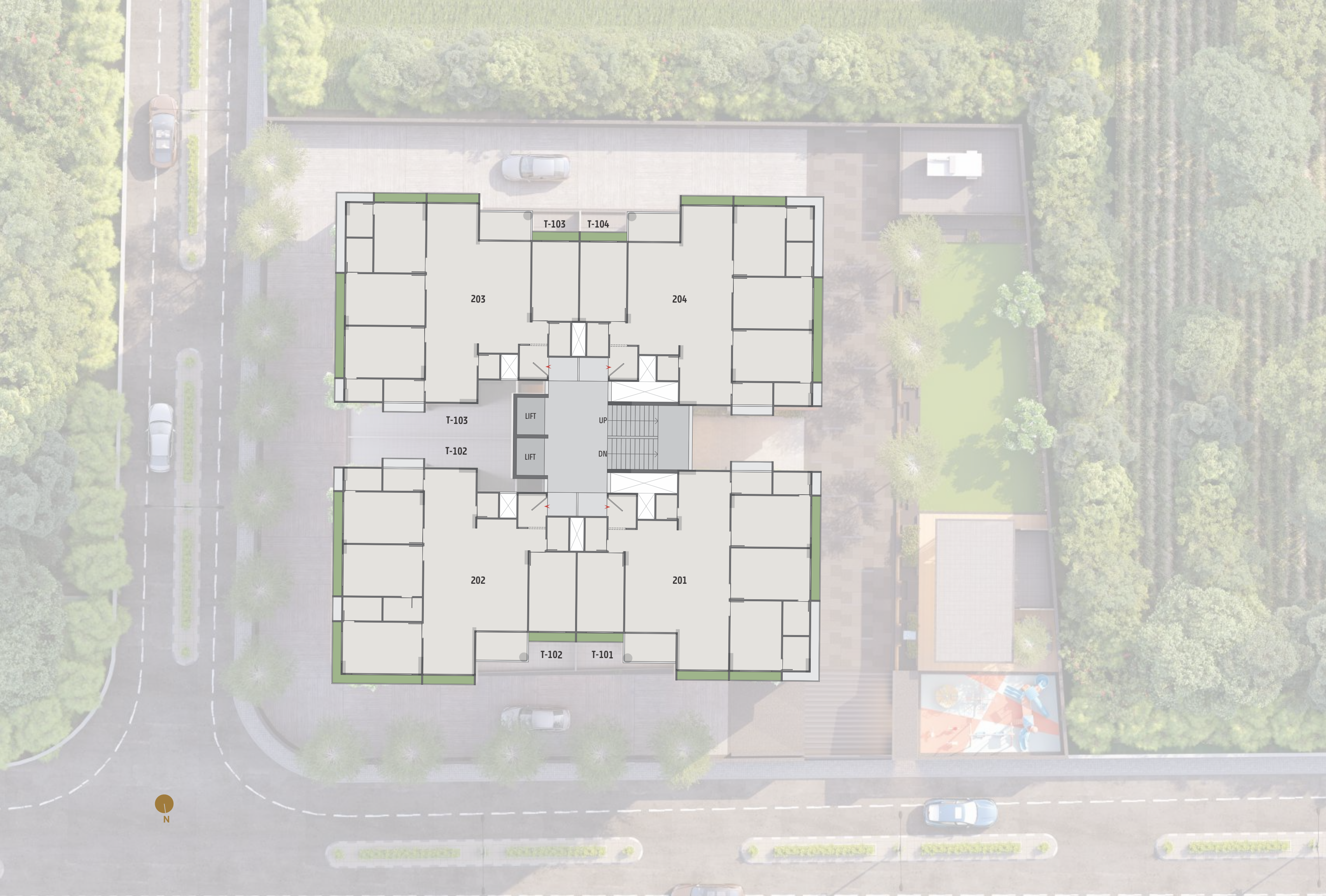
GROUND  
FLOOR





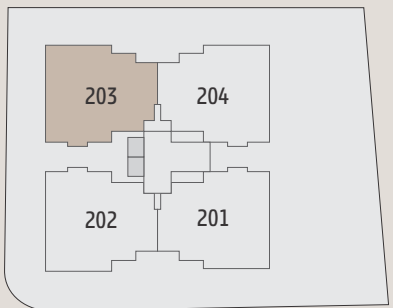
FIRST  
FLOOR





TYPICAL  
FLOOR

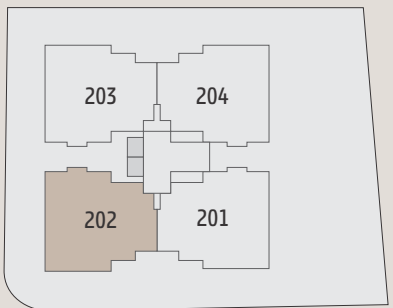




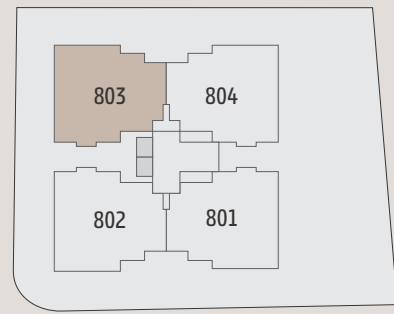
4 BHK - A  
UNIT PLAN



4 BHK - B  
UNIT PLAN







## 4 BHK - A PENTHOUSE

LOWER LEVEL (EIGHTH FLOOR)

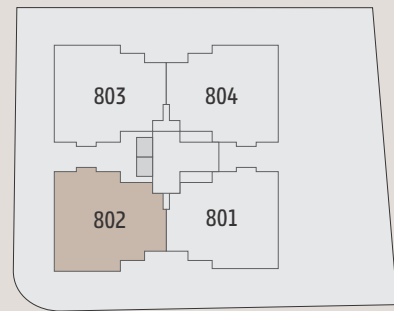


## 4 BHK - A PENTHOUSE

UPPER LEVEL (NINTH FLOOR)







4 BHK - B  
PENTHOUSE  
LOWER LEVEL (EIGHTH FLOOR)



4 BHK - B  
PENTHOUSE  
UPPER LEVEL (NINTH FLOOR)











# A HOME AT PRIME LOCATION

RAJSHREE SAMVAR II, is a connoisseur's epoxy for the pure lure of living, amassing cynosures in the most coveted and posh environs, for the enthralling serenity it lends despite its location, in close vicinity of the happening business and entertainment zones of the of the city.

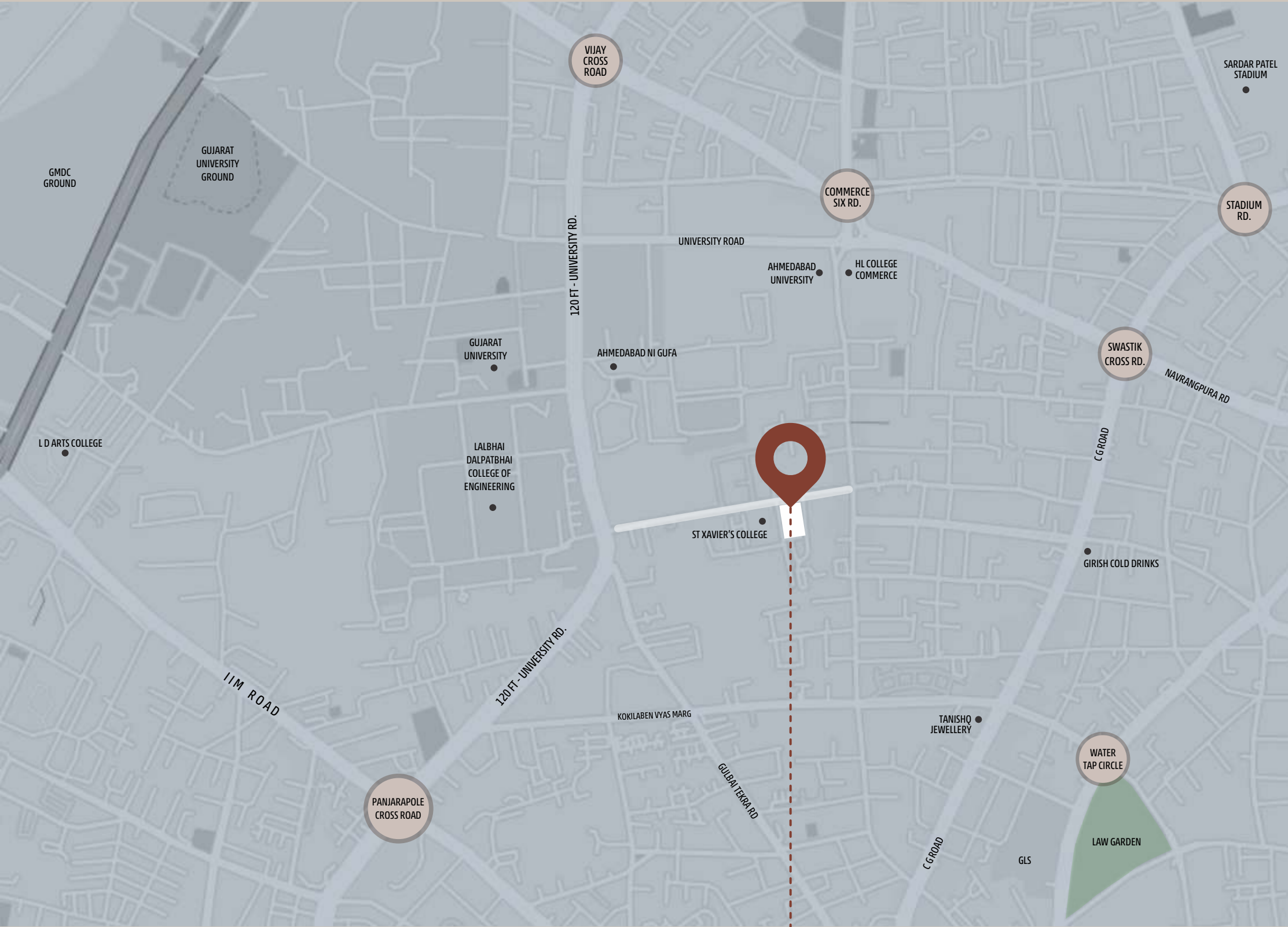
## SPECIFICATIONS

- FLOORING**
  - ITALIAN MARBLE IN DRAWING, DINING, LIVING & KITCHEN.
  - VITRIFIED TILES IN ALL BEDROOMS.
  - CERAMIC TILES IN ALL BATHROOMS.
  - RUSTIC TILES IN BALCONY.
  - KOTA STONE OR SIMILAR STONE IN STORE & WASH AREA.
- KITCHEN**
  - POLISHED NATURAL GRANITE PLATFORMS.
  - STAINLESS STEEL KITCHEN SINK.
  - GLAZED/CERAMIC TILE DADO UP TO THE LINTEL LEVEL ON WALLS ABOVE THE PLATFORM.
  - PROVISION FOR ELECTRICAL & PLUMBING LINE FOR RO.
- WALLS**
  - INTERIOR WALLS ARE PLASTERED & PUTTY FINISHED.
  - EXTERIOR WALLS ARE PAINTED WITH A 100% ACRYLIC BASED PAINT.
- DOORS**
  - DECORATIVE MAIN DOOR WITH BOTH SIDE VENEER FINISH.
  - MDF FINISH FLUSH DOOR WITH WOODEN POLISH FRAMING IN ALL BEDROOMS & BATHROOMS.
- WINDOWS**
  - POWDER COATED/ANODIZED ALUMINIUM WINDOW OR UPVC SLIDING WINDOW WITH STONE JAMB.
- BATHROOMS**
  - VITRIFIED TILES DADO ON THE WALLS UP TO THE LINTEL LEVEL.
  - HIGH QUALITY VITREOUS SANITARY WARE - CERA-JAQUAR OR EQUIVALENT & PLUMBING FIXTURES.
  - GEYSER POINTS IN ALL BATHROOMS.
- PLUMBING WORK**
  - CPVC/ GI WATER SUPPLY PIPES.
  - UPVC FOR SOIL, WASTE & DRAINAGE.
- ELECTRICAL WORK**
  - CONCEALED PVC CONDUITS WITH PVC INSULATED ISI GRADE COPPER WIRING.
  - ADEQUATE LIGHT POINTS.
  - MODULAR SWITCHES WITH MCB DISTRIBUTION BOARD
  - AIR-CONDITIONED PIPING WORK IN ALL ROOMS.
- SECURITY SYSTEM**
  - 24 X 7 SECURITY WITH CCTV SURVEILLANCE.





# LOCATION



RULES & REGULATIONS : • Stamp Duty, Registration Charges, Legal Documentation Charges, GST, Maintenance Deposit, GEB charges and any other charges shall be borne by buyer separately. • Any Additional charges of duties levied by government / local authority during or after the completion of the project will be borne by the buyer. • Internal changes shall be done with prior permission and shall be charged in advance. • Changes in external elevation shall not be permitted. • All rights reserved by the developer for alteration / modification / improvement in specification / changes in dimensions and planning shall be binding to all. • Business practices leading to pollution, causing material damage to the building or members are not allowed in the premises. • Irregular payments may attract interest or lead to cancellation of booking/s.

DISCLAIMER : • This brochure and model are not part of any legal documents. • All dimensions / measurement given are unfinished and approximates. • The photographs & artistic impressions are for references only. Actual building may vary from the representations mentioned in the brochure. • This is not an advertisement within the meaning of RERA. This is not an offer, invitation or commitment of any nature. Recipients are advised to appraise themselves of the necessary and relevant information of the project prior to making any purchase decisions. All the specifications of the flat shall be as per the final agreement between the parties. \*Subject To Ahmedabad Jurisdiction • T&C Applicable"

# RAJSHREE SAMVAR II